

3
BED

Lovely Detached House In A Great Location!

2, Caroline Close, Seaford, BN25 2UJ



Price £450,000

Freehold

phillipmann
we do more

www.phillipmann.com

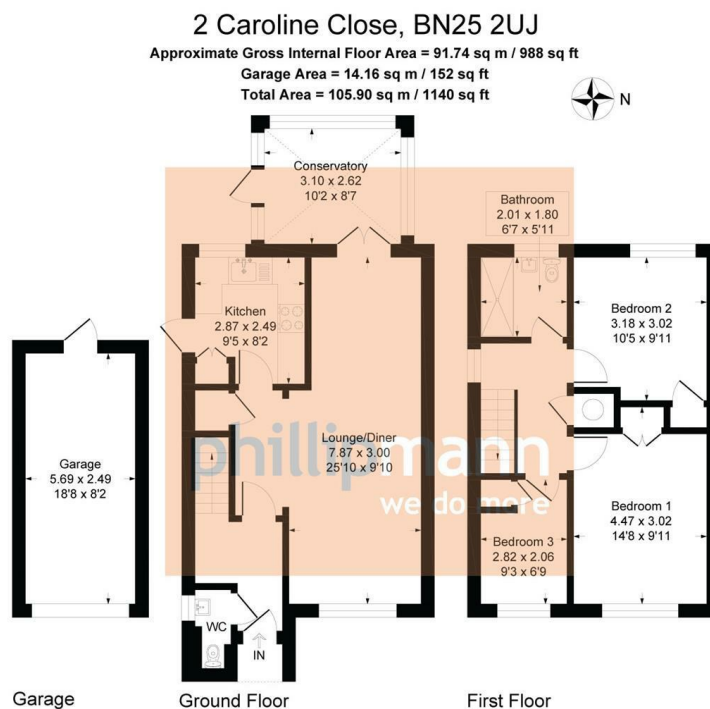


Illustration for identification purposes only, measurements are approximate, not to scale

inbrief...

Phillipmann Estate Agents are delighted to offer for sale this lovely detached home situated in a popular close. This property benefits from being close to the town centre, local shops, local bus routes, schools and a driveway.

As you approach the property you will find a separate garage with an electric door and power, the property also includes solar panels and a new UPVC front door. A downstairs W/C with wash-hand basin, heated towel rail and is part tiled.

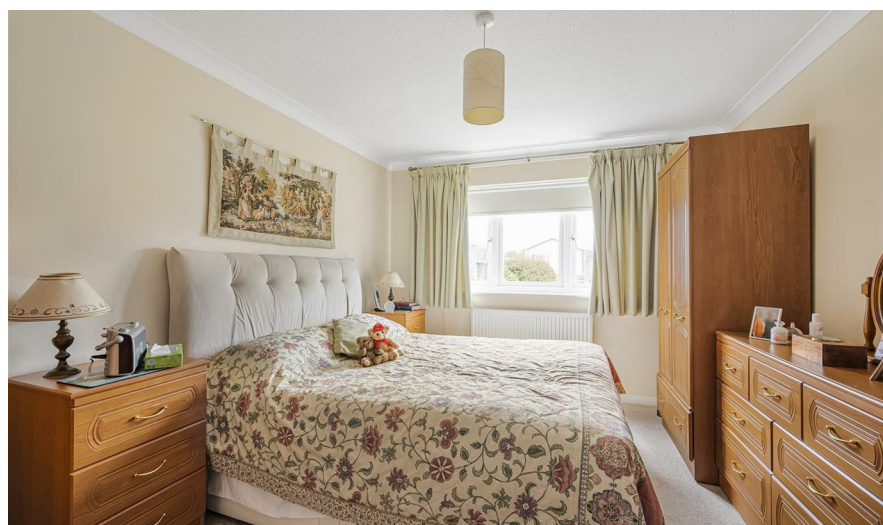
The lounge diner is a very spacious room which seats multiple occupants and has a lovely electric fireplace, following into a lovely sun-room with power outlets and room for a table and chairs. Into the kitchen which includes multiple base and wall hung units, washing machine space, integrated fridge-freezer and dishwasher, stainless steel sink drainer and side door to the garden.

Heading upstairs, the family shower-room is tiled throughout and has a large walk-in shower which is plumbed in and also includes a sink vanity unit, W/C and a heated towel-rail.

Bedroom three is a good size with ample furniture space and over-looks the front of the property. Bedroom two is a spacious double bedroom and includes built-in storage cupboards, space for furniture and is at the back of the property looking over the garden. Bedroom one is a great double bedroom with built-in wardrobe and also again plenty of space for chest of drawers, bedside tables and a large dresser.

The garden is a stunning wrap-around corner plot which is very secluded, stocked with mature hedges and shrubs. Also, new fences recently installed by the current owners and a side-access gate is accessible from the garden.

Viewings highly advised for this property as it benefits from plenty of upgrades be the current owner, and it is situated in a great location close to plenty of amenities.



Council Tax Band: D

Energy Rating Level: C

moreinfo...



Phillip Mann Seaford Office
 1-3 Dane Road, Seaford, East Sussex, BN25 1LG
 01323 898666

To see more details on this & all our homes go to
www.phillipmann.com